



Apex Rinse HD

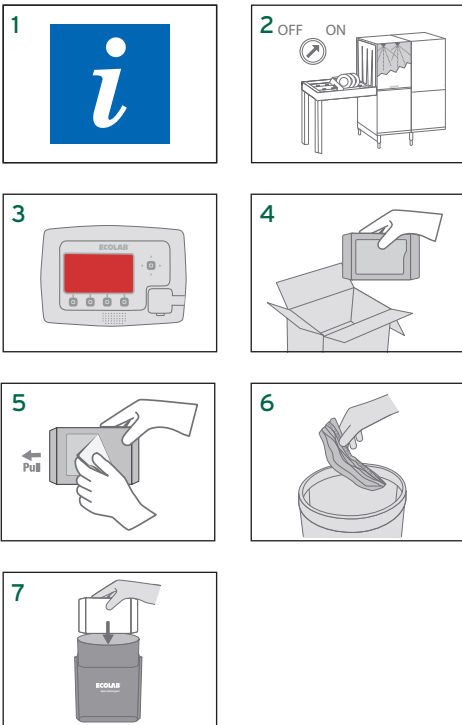
SUPER CONCENTRATED SOLID RINSE ADDITIVE

PROVIDES SPARKLING AND IMPECCABLE TABLEWARE

- ▲ **Performance:** Consistent sparkling and shiny results in soft - medium water conditions and high dissolved solid water content.
- ▲ **Efficiency:** Optimal cost in use. 100 % usage. Minimal storage, long lasting blocks. Faster drying process, thus making your operation more efficient.
- ▲ **Safety:** Easy to handle and refill. Requires no PPE. Colour and shape coded. No mixing possible. Light weight.
- ▲ **Sustainability:** Up to 95 % less packaging and 70 % less transport.



USE INSTRUCTIONS



FOR USE WITH

ECOLAB APEX RINSE DISPENSER

Your Ecolab specialist will adjust dosing system for your specific cleaning needs. To achieve the best hygienic results, please always use **Apex Rinse** combined with Apex machine detergents and Apex presoak products.

- 1 Check MSDS for safety advice and hygiene plan and product label for detailed use information
- 2 Wash crockery and utensils in the dishwasher according to the standard procedure

REFILL DISPENSER

- 3 Refill the product compartment when APEX controller screen indicates (screen will turn red and an acoustic alarm will sound)
- 4 Take new product out of carton
- 5 Remove the plastic foil from rinse block
- 6 Dispose of plastic foil via standard waste
- 7 Refill dispenser. APEX controller screen will automatically switch to blue

SPECIAL NOTES / INFORMATION

Compatible with the usual warewashing materials (china, glass, stainless steel, etc.).

For professional use only

USE INSTRUCTIONS AND ENVIRONMENTAL ADVICE

- ▲ Attempt to wash full machines whenever possible
- ▲ Avoid under- or over-dosing
- ▲ Wash at the lowest temperature possible resulting in hygienic dishes
- ▲ Information on disposal of empty packaging: recycle as soft plastic package

SAFETY

For further information and safety instructions, see product label and Safety Data Sheet.

STORAGE CONDITIONS

Store between 0 and 40 °C in original closed container only.

PACK SIZE

2 x 1,1 kg