

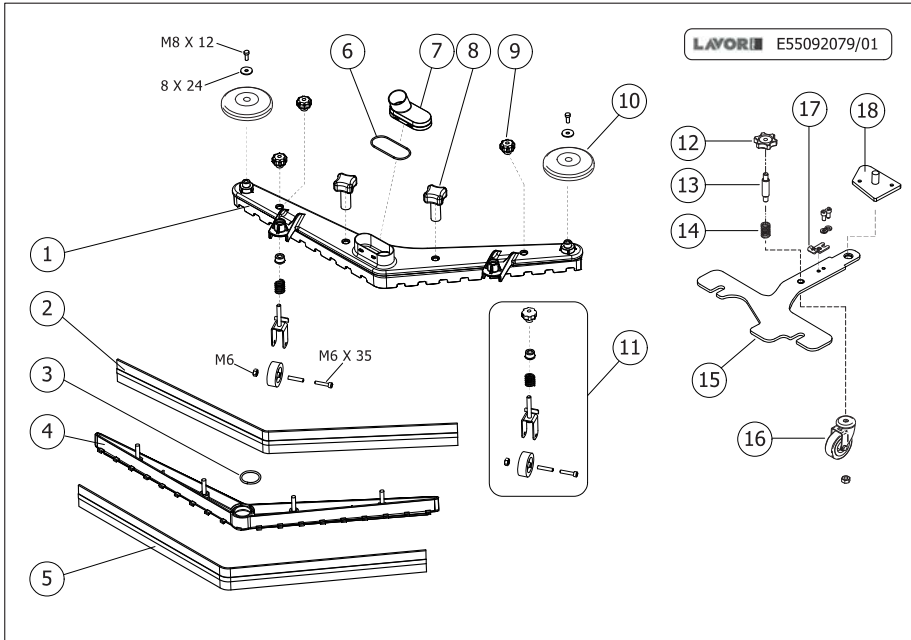
LAVORWASH
SERVICE

PARTS LIST

Code R8527AC02-1
Description ACCESSORIES/COMPONENTS

Start Date 24/4/2012
End Date 1/1/3000
Table E8527A002-01

Pos.	Code	Price	Q.ty per pck.	Qty.	Description	Alternative	Price	G	P
001	4.508.0780	336.27	1	1	RECOVERY TANK - LIGHT GREY	5.511.1336	403.84	1	1
002	4.508.0477	376.15	1	1	SOLUTION TANK SWIFT B - GREY		0	0	0

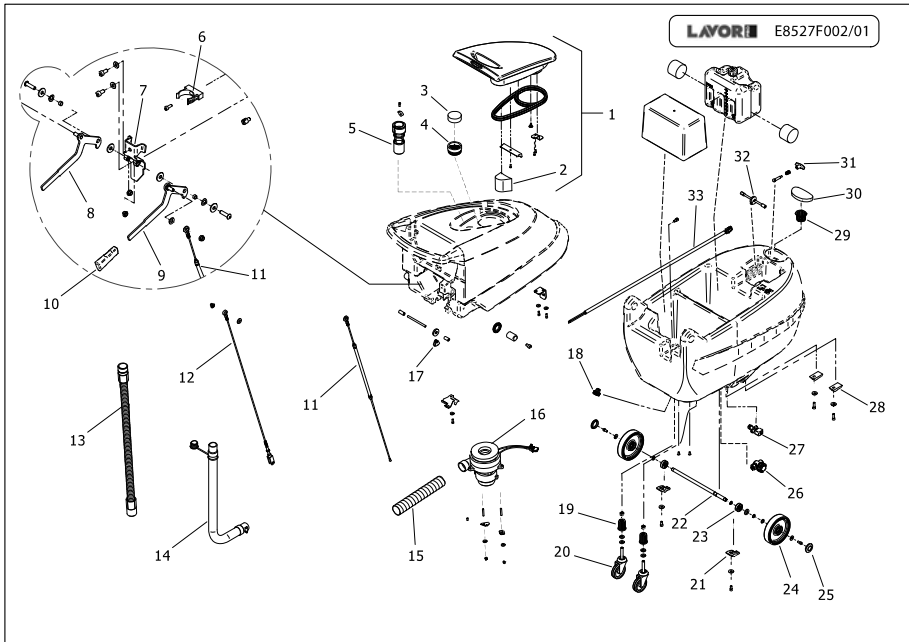


PARTS LIST

Code R55092079-1
Description SQUEEGEE

Start Date 24/4/2012
End Date 1/1/3000
Table E55092079-01

Pos.	Code	Price	Q.ty per pck.	Qty.	Description	Alternative	Price	G	P
001	4.505.0866	79.17	1	1	SQUEEGEE L=780 MM SANDBLAST AND CATAPHORESIS		0	0	0
002	4.508.X468	13.93	2	1	FRONT SQUEEGEE BLADE L.830 TH.2,5		0	0	0
003	3.200.0168	1.07	20	1	O-RING 4143		0	0	0
004	4.508.0505	29.02	1	1	SQUEEGEE BLADES HOLDER		0	0	0
005	4.508.X467	13.93	2	1	REAR SQUEEGEE BLADE L.870 TH.3		0	0	0
006	3.200.0172	1.07	20	1	O-RING 3275		0	0	0
007	4.508.1552C	1.52	15	1	SQUEEGEE SUCTION COMPARTMENTCOVER		0	0	0
008	3.099.1265	21.42	1	2	KNOB D.52 M8		0	0	0
009	3.099.0467	10.71	2	4	KNOB M8		0	0	0
010	4.508.0224	10.71	2	2	BUMPER WHEEL D.110 GREY		0	0	0
011	5.511.1823	29.2	1	2	SQUEEGEE WHEEL ASSEMBLY		0	0	0
012	3.099.1189	21.42	1	1	KNOB M8 H26		0	0	0
013	4.507.1385	5.15	4	1	ADJUSTING PIN		0	0	0
014	4.507.1076	21.42	1	1	SPRING		0	0	0
015	4.507.1478	0	1	1	SQUEEGEE SUPPORT		0	0	0
016	3.006.0076	10.71	2	1	SQUEEGEE WHEEL (D.50)		0	0	0



PARTS LIST

Code R55092096-1
Description TANKS

Start Date 24/4/2012
End Date 1/1/3000
Table E8527F002-01

Pos.	Code	Price	Q.ty per pck.	Qty.	Description	Alternative	Price	G	P
001	5.511.1657	0	1	1	TANK COVER ASSEMBLY		0	0	0
002	4.508.0766	10.71	2	1	MT. 8 1/4 CONNECTION H.P. HOSEAIRFOAM GASKET		0	0	0
003	4.508.0768	10.71	2	1	CIRCULAR AIRFOAM GASKET		0	0	0
004	4.508.0770	10.99	2	1	RUBBER FILTER SWIFT B/E		0	0	0
005	5.511.1656	52	1	1	FLOAT ASSEMBLY		0	0	0
006	3.099.0343	10.71	2	1	HOSE HOLDER D. 40		0	0	0
007	5.513.0134	22.5	1	1	LEVER SUPPORT		0	0	0
008	5.513.0133	35.43	1	1	BRUSH PLATE LIFTING ASSEMBLY		0	0	0
009	5.513.0132	35.43	1	1	SQG LIFTING LEVER ASSEMBLY		0	0	0
010	4.508.0971	21.42	1	2	HANDLE SPECIAL LEVEL (15X4)		0	0	0
011	3.099.1329	22.71	1	1	SQUEGEE LIFT CABLE	5.511.1331	44.43	1	0
012	3.099.0881	23.57	1	1	CABLE D.2,5x133 L=685		0	0	0
013	5.509.0629	24.92	1	1	SUCTION HOSE ASSEMBLY		0	0	0
014	5.511.1655	39.1	1	1	EXHAUST PIPE ASSEMBLY		0	0	0
015	3.752.0167	55.7	1	1	AIR PIPE D.51 LENGHT 300mm		0	0	0
016	5.511.1659	142.14	1	1	INTAKE MOTOR ASSEMBLY FOR ELECTRIC SWIFT/FREE		0	0	0
017	4.506.0142	21.42	1	1	PULLEY FORK		0	0	0
018	5.511.0937	21.42	1	1	TANK DRAIN CAP ASSY		0	0	0
019	4.508.0866	2	12	2	WHEEL SUPPORT - SWIF B	5.511.1359	21.42	1	0
020	3.006.0128	54.21	1	2	REVOLVING WHEEL D.80 OIL-PROOF+SCREW M12X80		0	0	0
021	4.508.0689	21.42	1	2	FIXING WHEEL AXLE - SWIFT B		0	0	0
022	4.507.0922	21.42	1	1	WHEEL SHAFT - SWIFT B		0	0	0
023	4.508.0687	21.42	1	2	AXLE SUPPORT - SWIFT B		0	0	0
024	3.006.0109	25.25	1	2	WHEEL D.160		0	0	0
025	3.099.1066	10.71	2	2	CAP FOR WHEEL - GREY		0	0	0

PARTS LIST

Code R55092096-1

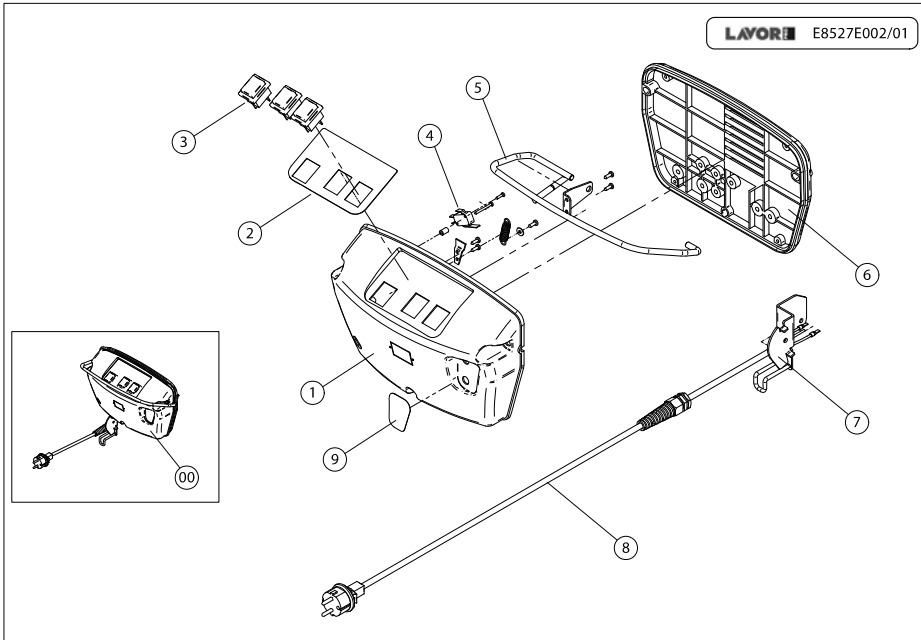
Start Date 24/4/2012

Description TANKS

End Date 1/1/3000

Table E8527F002-01

Pos.	Code	Price	Q.ty per pck.	Qty.	Description	Alternative	Price	G	P
026	3.102.0023	56.5	1	1	WATER FILTER WITH FLOW REGULATOR		0	0	0
027	3.412.0024	103.14	1	1	SOLENOID VALVE 230V		0	0	0
028	4.507.0793	21.42	1	2	LEVER SUPPORT PLATE - SWIFT B		0	0	0
029	4.508.1064	1.07	20	1	DETERGENT TANK FILTER FOR SWIFT/FLICK		0	0	0
030	4.508.0739	10.71	2	1	SPONGE FILTER		0	0	0
031	3.099.0307	2.02	20	1	HANDLE FOR TIE ROD BLACK MODELMT/58/FFC-M6		0	0	0
032	5.511.0991	27.81	1	1	BRUSH PLATE LIFTING AXLE ASSEMBLY		0	0	0
033	3.499.0434	0	1	1	BRUSH MOTOR CABLING FREE BM/BT		0	0	0



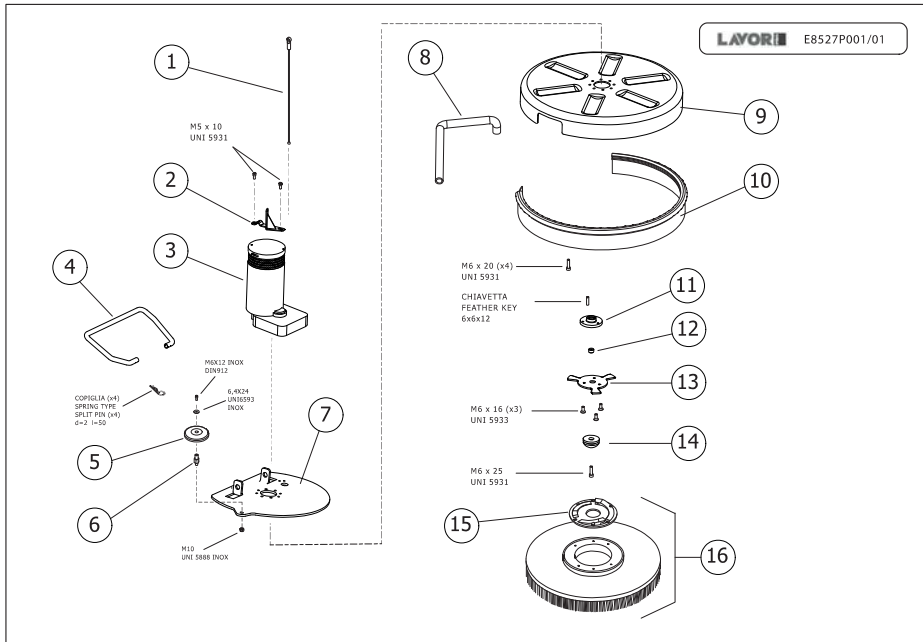
LAVORWASH
SERVICE

PARTS LIST

Code R55111309-1
Description CONTROLS

Start Date 24/4/2012
End Date 1/1/3000
Table E8527E002-01

Pos.	Code	Price	Q.ty per pck.	Qty.	Description	Alternative	Price	G	P
000	5.511.1309	295.16	1	1	ELECTRIC BOX - NOX		0	0	0
001	4.508.0621	49.72	1	1	CAP FOR ELECTRIC BOX		0	0	0
002	7.503.0138	22.5	1	1	STICKER FOR DASHBOARD SCL EASY-R (E) LWS		0	0	0
003	5.009.0213	10.71	2	3	SWITCH WITH PROTECTION 12(10)		0	0	0
004	3.401.0113	21.42	1	1	MICROSWITCH SAIA XGO2-88-J24		0	0	0
005	4.507.0706	21.42	1	1	LEVER		0	0	0
006	4.508.0397	21.42	1	1	ELECTRIC BOX SUPPORT		0	0	0
007	4.507.1211	59.62	1	1	SUPPORT FOR WATER OUTLET CONTROL DEVICE - FREE E		0	0	0
008	4.512.0073	21.68	1	1	MAINS SUPPLY CABLE CM. 80 WITH SCHUKO PLUG		0	0	0



LAVORWASH
SERVICE

PARTS LIST

Code R55092105-1
Description BRUSH PLATE

Start Date 24/4/2012
End Date 1/1/3000
Table E8527P001-01

Pos.	Code	Price	Q.ty per pck.	Qty.	Description	Alternative	Price	G	P
001	3.099.1730	0	1	1	S/S CABLE L=240mm		0	0	0
002	4.507.1482	0	3	1	BRACKET FOR MOTOR LIFTING CABLE-FREE EVO		0	0	0
003	5.501.0084	0	1	1	MOTOR+GEARBOX 230V AC 550W 3,7A 160RPM (HY-183J)		0	0	0
004	4.507.1465	0	1	1	BRUSH PLATE LIFTING BAR - FREEEVO		0	0	0
005	4.508.0224	10.71	2	1	BUMPER WHEEL D.110 GREY		0	0	0
006	4.507.0308	21.42	1	1	SUPPORT FOR BUMPER WHEEL		0	0	0
007	4.507.1463	0	1	1	BRUSH PLATE		0	0	0
008	3.099.0865	38.93	1	1	HOSE ARMONVILLE D.int.=14 L=580		0	0	0
009	4.508.1543	20	1	1	BRUSH COVER 50CM		0	0	0
010	4.508.1554	75	1	1	BUMPER FREE EKO		0	0	0
011	4.507.1470	32.96	1	1	BUSHING		0	0	0
012	4.507.1469	0	1	1	BUSHING		0	0	0
013	4.507.0300	21.42	1	1	BRUSH COUPLING		0	0	0
014	5.511.0867	17.14	2	1	BRUSH COUPLING ASSEMBLY		0	0	0
015	4.508.1192	10.71	2	1	UNIFIED FLANGE FOR BRUSH COUPLING		0	0	0
016	5.511.1097	94.01	1	1	PPL BRUSH 480 MM. W/UNIFIED COUPLING FLANGE		0	0	0